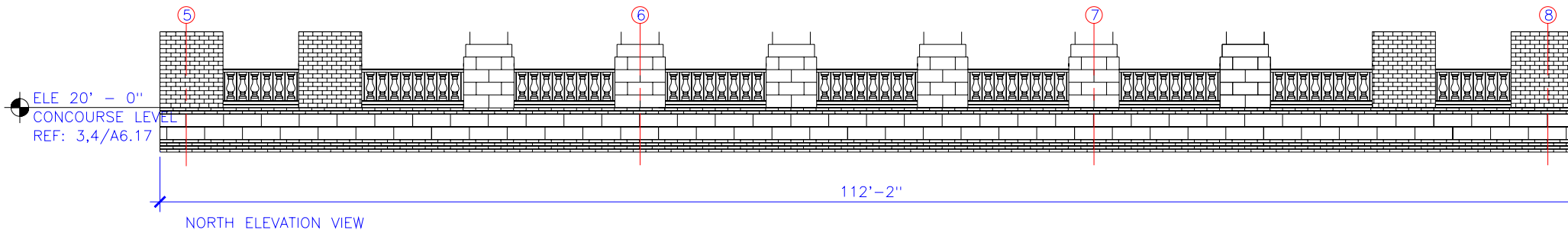
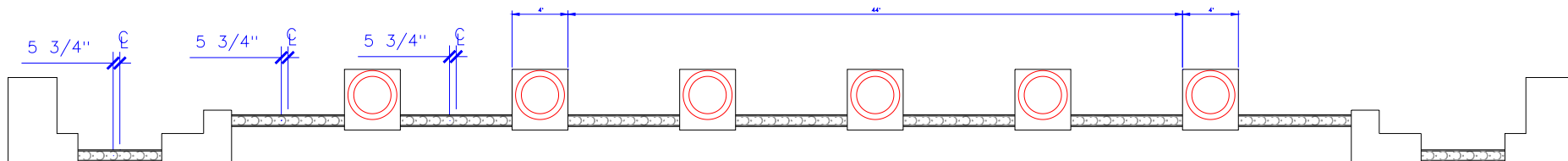


PARTIAL ELEVATION VIEW
SCALE: 3/8" = 1'



PROJECT:		ITEM TAG: NORTH BALUSTRADE	
 Stromberg Architectural Products P.O. Box 8036, I-30 West, Greenville, TX 75404 (903) 454-8682 FAX (903) 454-3642		DRAWN BY:	DATE:
		SCALE: 1/8" = 1'	DWG: REB.-.-.S.1.R3
			SHEET 1 OF 1