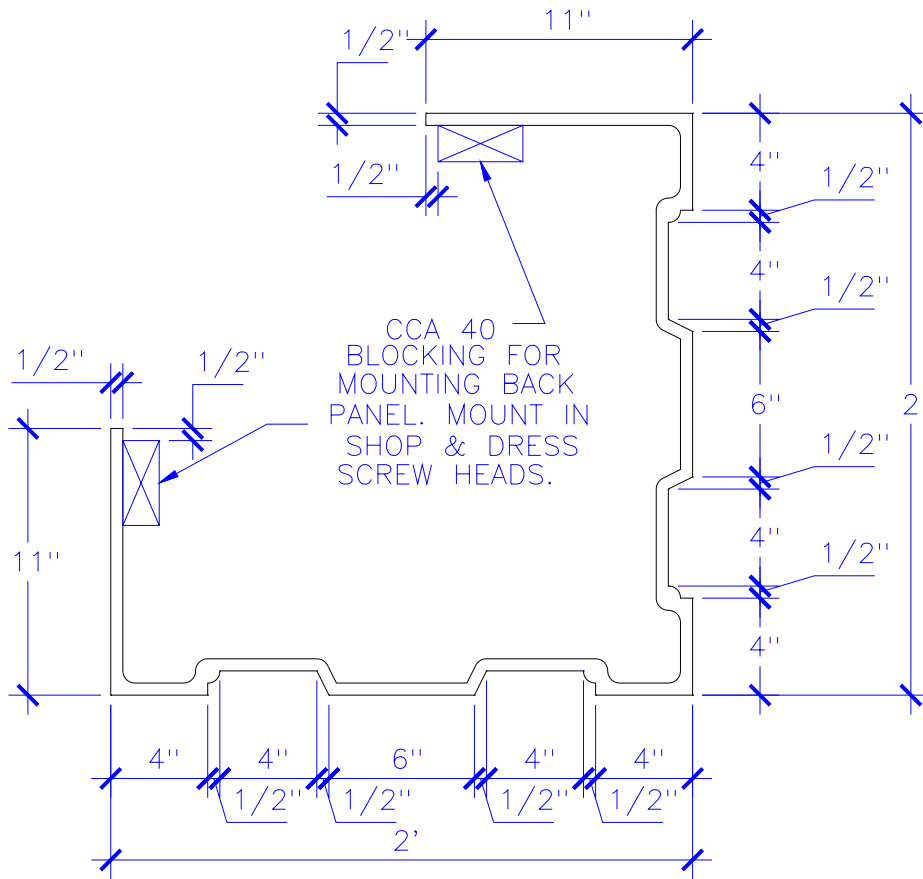


PERIMETER 2' - 2"  
WEIGHT 13 LBS./LINEAR FT.

CORNER PIER  
BACK PANEL



CCA 40  
BLOCKING FOR  
MOUNTING BACK  
PANEL. MOUNT IN  
SHOP & DRESS  
SCREW HEADS.

PERIMETER 6' - 4"  
WEIGHT 38 LBS./LINEAR FT.

CORNER PIER  
FRONT PANEL

PROJECT:		TITLE: GFRC CORNER PIER	
REVISIONS:		TYPE DWG: CROSS SECTION	DRAWN BY:
 <b>Stromberg Architectural Products</b> P.O. Box 8036, I-30 West, Greenville, TX 75404 (903) 454-8682 FAX (903) 454-3642		SCALE: 1 1/2"	DATE:
		DWG. SHEET: AHSGBL. - . - .X.5.R0	