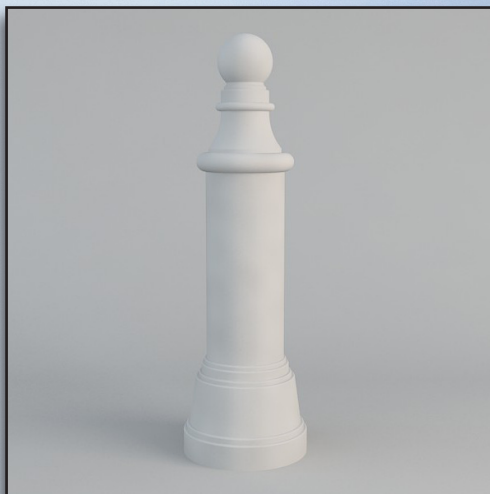




SBS-001



White

The look of this exceptionally sturdy bollard is deceptively delicate. The not too big circular base tapers to a slender and smooth body. A noticeable band surrounds the top of the body and the bollard narrows once again. The finishing touch is a solid sphere that resembles a ball style finial and provides a soft and subtle end point. Designed to be eye catching and suitable for heavy-duty security applications, this bollard can be crafted in concrete, cast stone, stone, and lighter composites. Custom sizes and finishes are also available. With this selection, you can get the weight you need in a security bollard without sacrificing visual appeal.

- **Size:**

19" Sq. x 31" H
(Custom sizes available)

- **Material Options:**

• Concrete • Cast Stone • GFRC
• Architectural Fiberglass • Stone

- **Weight:**

Approximate weight in reinforced concrete or cast stone: 600 Lbs.
Approximate weight in GFRC:
Approximate weight in architectural fiberglass (GFRP):

- **Logo Options:**

Cast in or printed logos or letters

- **Color and Texture:**

Gray, Sand, Buff, Cream, Brown, Brick Red, Charcoal, Green & Custom colors.

- **Color Options:**

Patina: Green Patina- Cappuccino
Pottery - Custom Patinas
Acid Wash: White- Gray - Sand
Buff - Cream - Brown
Painted: Specify a paint color

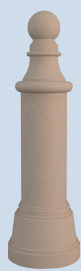
External Links:

For color and mounting options and product specifications, visit our [bollard project page](#).

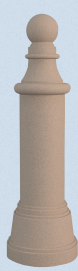
Additional Standard Colors:



Buff



Brick Brown



Gray

Custom is what we do. Want something different? Have an idea, drawing or concept that you need built? That's what we do. We'll not only make it happen. We'll make it happen the way you want. Call us at (903) 454-0904, we can help.