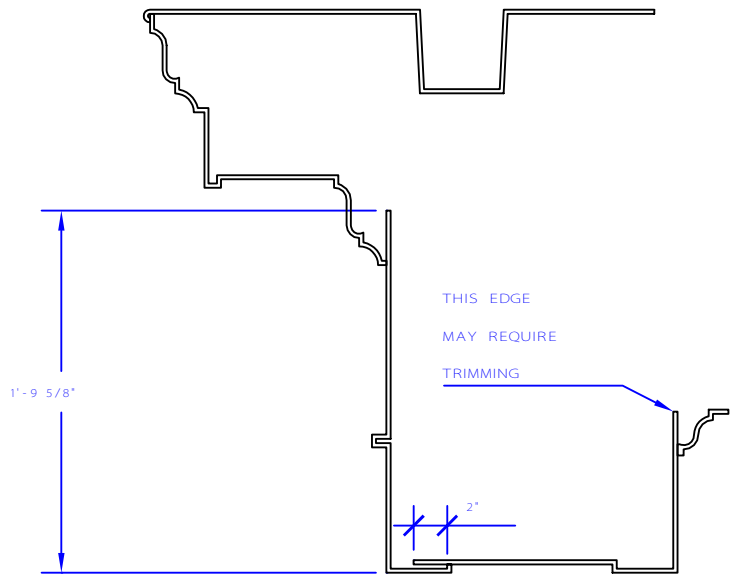
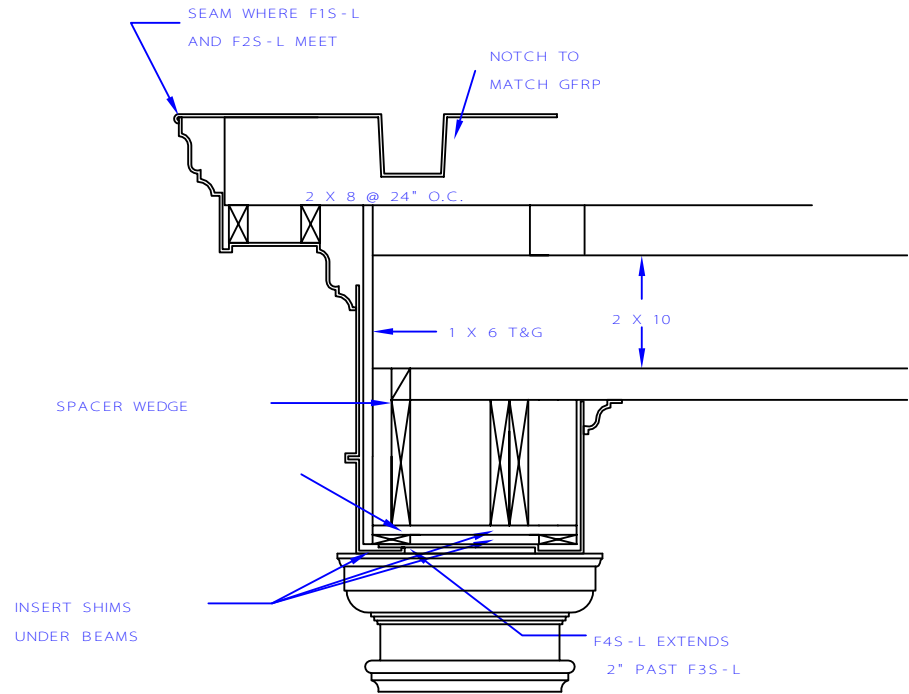


○ BEFORE ASSEMBLY
SCALE 1" = 1'



○ FINISHED ASSEMBLY
SCALE 1" = 1'



○ A DETAIL A
SCALE 3/4" = 1'

SECTION AS INSTALLED,
BASED ON PROVIDED
FRAMING DRAWINGS.

Stromberg Architectural Products

P.O. Box 8036 I-30 West Greenville, Texas, 75404
(903) 454-8682 FAX (903) 454-3642



TITLE: CAP, CORNICE, FACIA, AND SOFFIT ASSEMBLY PLAN

SCALE: 1 1/2" = 1'

FILE NO: AP1