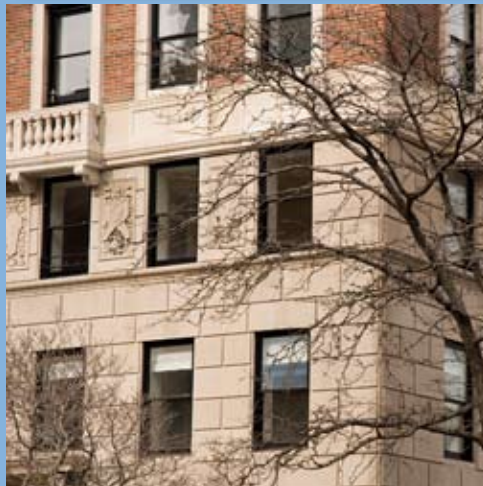


100 BEACON STREET

boston, massachusetts



The upscale condominium community at 100 Beacon Street in Boston, Mass., inhabits a building that is chock full of history. The structure was originally built in 1900, and from its upper floors you can look out across the Charles River into the City of Cambridge. In 1960 the building was purchased by Emerson College to serve as a dormitory when the school reached a population of 609 undergraduates and 29 graduate students. The structure sits directly across the street from the Hatch Memorial Shell, which was made famous by Arthur Fiedler and the Boston Pops Orchestra as well as being the site of the largest ever independent music concert held in 2004 when more than 110,000 fans showed up for a free concert given by Dispatch. The 50,000 square foot building was sold by the university in 2006.

Today, multi-million-dollar condominiums fill out this elegant address in one of Boston's prime real estate areas. When it comes to renovating historic structures that require the utmost attention to detail, Stromberg is the company to turn to. Stromberg fabricated more than 2,000 square feet of brackets, cornice, egg-and-dart and dentil features in our Glass Fiber Reinforced Concrete (GFRC). GFRC provides multiple benefits over true concrete. Its lighter weight is instrumental in lessening the load on historic structures which has made GFRC extremely popular among the top restoration experts in the industry. Stromberg Architectural Products is the global leader in GFRC production, with more than 30 years of experience in bringing aged structures back to life. Stromberg Architectural Products supplied columns, cornice and balustrade for this prestigious project. These products were made from our Glass Fiber Reinforced Concrete (GFRC).

STROMBERG

www.4stromberg.com
903.454.0904